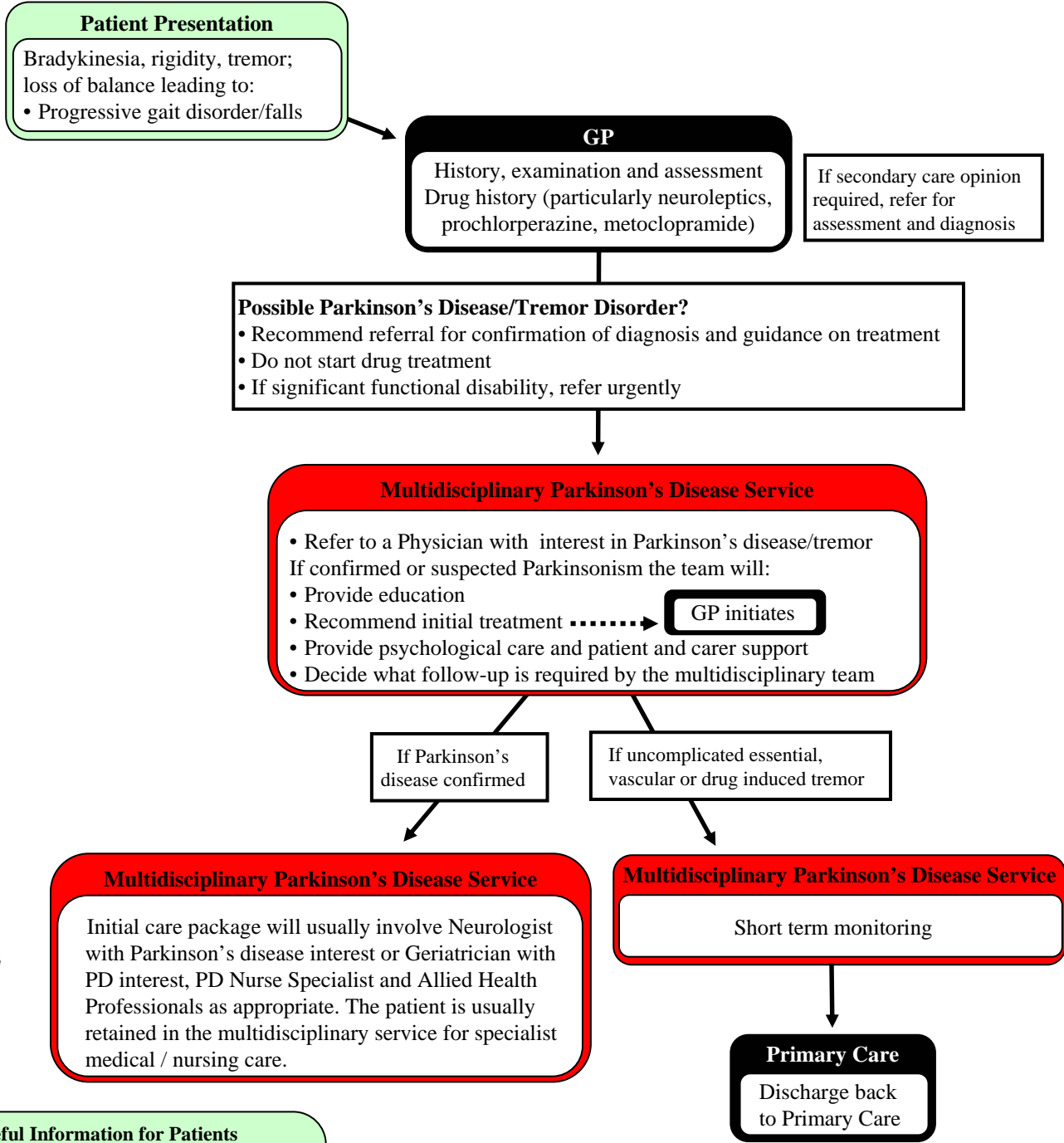


Parkinson’s Disease Introduction:

There are four recognised phases in patients with Parkinson’s disease : diagnostic, maintenance, complex and palliative. Patients may present with new problems to Primary Care in any one of these phases. We hope this Patient Pathway assists Primary Care professionals to identify the appropriate course of action based on presenting symptoms and disease phase.

Another aim of this Pathway is to recommend a multidisciplinary approach to looking after these patients in Secondary Care, based on a good evidence base and professional expert opinion. More detail is available in the document **Parkinson’s Disease Aware in Primary Care** (www.parkinsons.org.uk).

Diagnostic Phase



Go to page 2

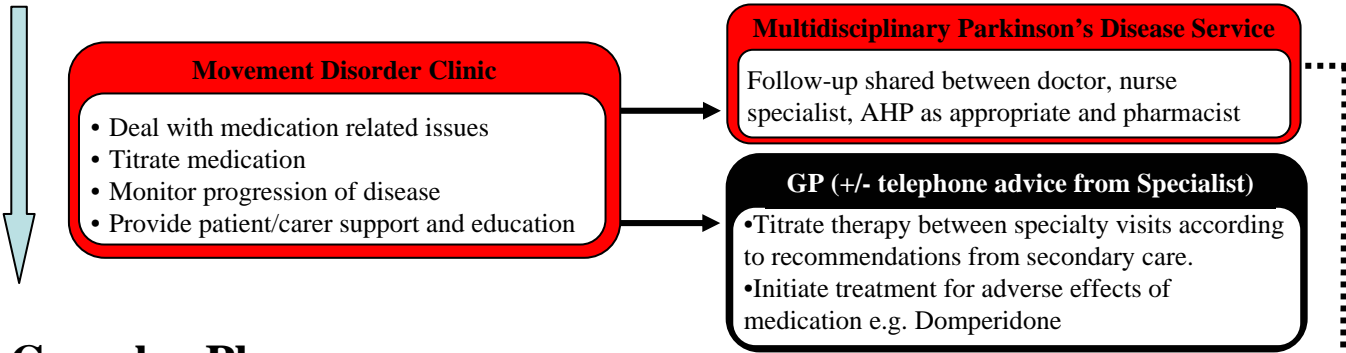
Useful Information for Patients

NHS24: 08454 24 24 24
www.doctoronline.nhs.uk
www.patient.co.uk
www.parkinsons.org.uk
 Helpline (freephone) 0808 800 0303

www.cci.scot.nhs.uk

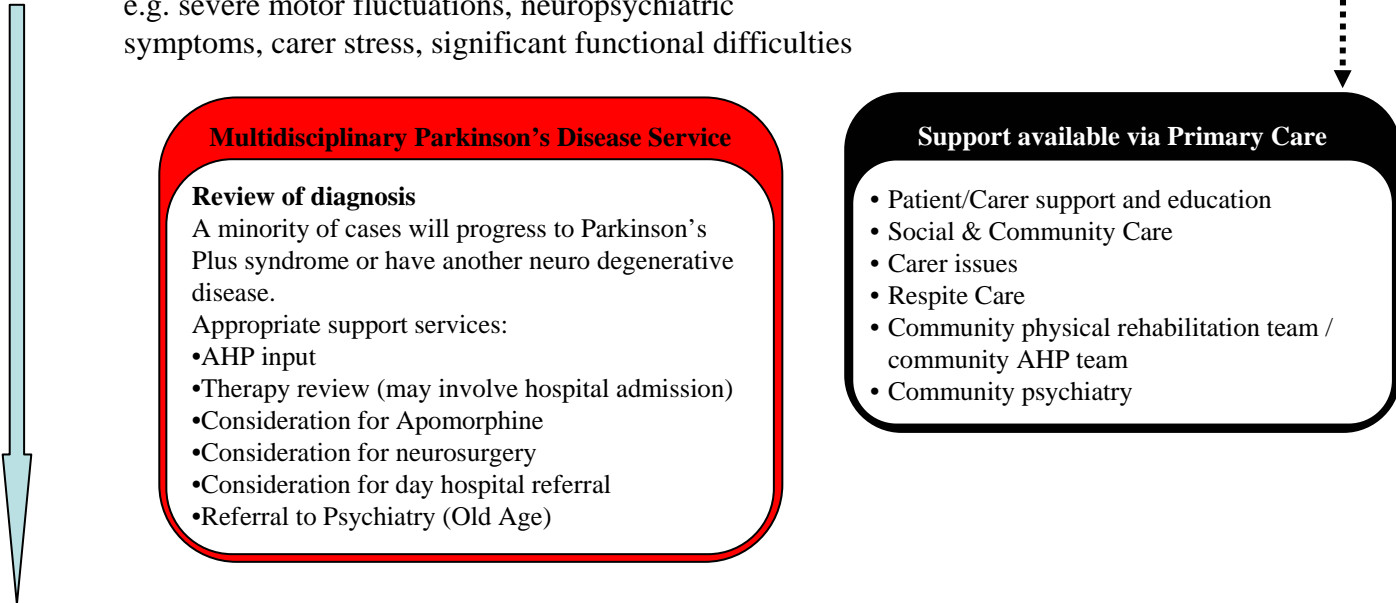


Maintenance Phase – medication provides relatively smooth control of symptoms

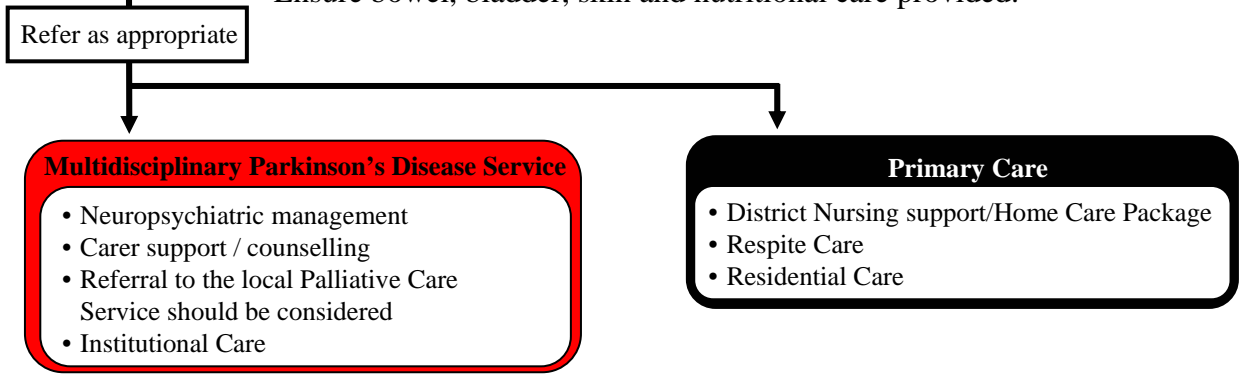


Complex Phase

e.g. severe motor fluctuations, neuropsychiatric symptoms, carer stress, significant functional difficulties



Palliative Phase - Simplify medication (main input: medical, nursing and pharmacy). Ensure bowel, bladder, skin and nutritional care provided.



Suggested professionals providing input into Multidisciplinary Parkinson’s Disease Service:	
<ul style="list-style-type: none"> • Physician with an interest in Parkinson’s Disease (either Neurologist or Care of the Elderly Physician). • Clinical Nurse Specialist • Physiotherapist • Occupational Therapist • Dietician 	<ul style="list-style-type: none"> • Speech & Language Therapist • Pharmacist • Social Worker • Community Psychiatric Nurse • Psychiatrist • Psychologist • Podiatrist • Dentist • Others as appropriate